

mobility



Application

Troubleshooting before running to troubled machine

You can confirm possible causes of errors to prepare for necessary actions and tools before running down to the point of the problem on a mobile device anywhere.

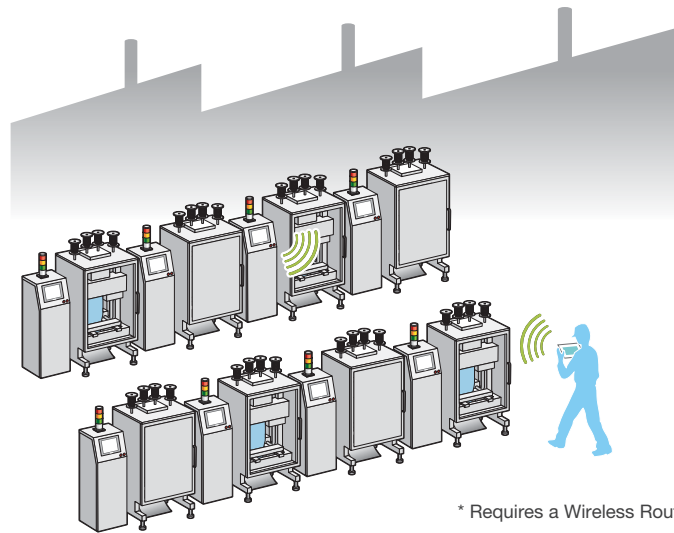


* Requires a Wireless Router.

Efficiently and effectively monitor machines on the factory floor

Check the status of a machine with a touch of the tablet or smartphone already in your hand.

In a production site with multiple machines, you can reduce regular maintenance, and confirm remaining material supply or other machine information without moving between machines.

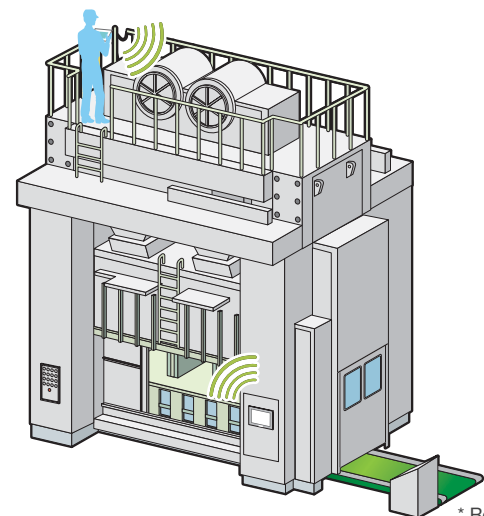


* Requires a Wireless Router.

Flexible Monitoring of Large/Long Equipment

Using the remote monitoring and operation functions, actions that previously required multiple staff for a large-sized machine or long-distance application can be easily accomplished by fewer operators.

*Please check equipment status and maintain conditions for machine safety to avoid unintended equipment operation.



* Requires a Wireless Router.

Features

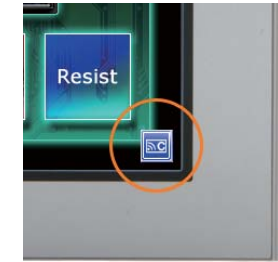
Screen Shortcut

Images or texts of machines to monitor can be registered as shortcuts to easily jump from one HMI to another among multiple applications, for various working environment, such as in an office or manufacturing site.



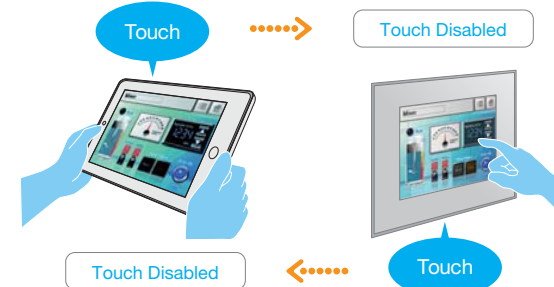
Remote Status Icon

A local operator can check the status of remote connection and touch monopoly of HMI server or remote client on a HMI screen for safer operation.



Touch Exclusive Control

Setting the monopolize touch function prevents unexpected operational misuses caused by redundant operation. Operation is re-enabled a maximum of 30 seconds after Pro-face Remote HMI or the GP unit on the equipment has been operated.



Synchronized or Asynchronized Monitoring

Pro-face Remote HMI lets you switch communication modes to monitor status.

*Synchronous mode allows you to monitor screens that are the same as the operators' screens. Asynchronous mode allows you to monitor different screens during regular operation without stopping on-site operation.



Web Support

Reliable 24/7 support through the internet.

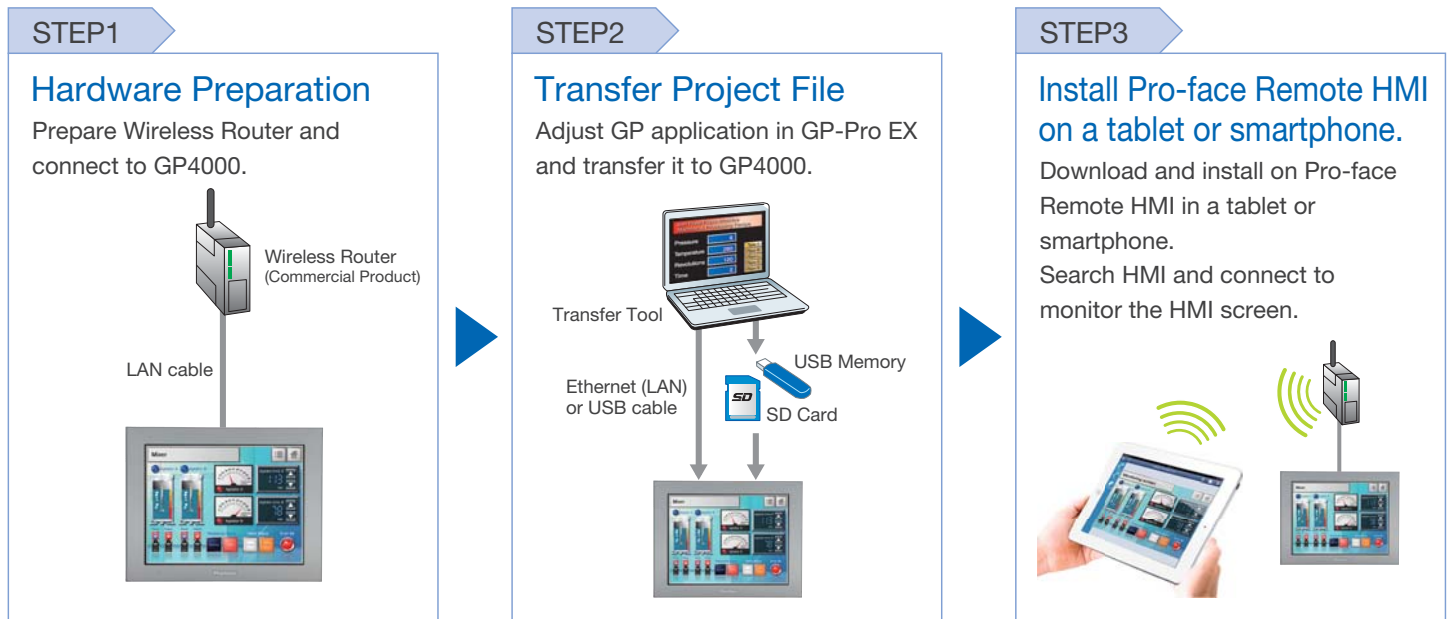
The contents of Pro-face Remote HMI support site offers services aimed at reducing development time for customers such as Q&A information.



For further information, visit our website.
<http://www.pro-face.com/otasuke/qa/remotehmi/qa.html>



Quick steps to use Pro-face Remote HMI



How to get Pro-face Remote HMI

The Pro-face Remote HMI software can be purchased directly from App Store or Google Play via a mobile terminal anytime.



iOS: Ver. 5.1 or later / 6.0 or later

Android OS: Ver. 2.3x / 3.0x / 4.0x

Please search "Pro-face Remote HMI" on App Store or Google play.

⚠ WARNING

HAZARD OF OPERATOR INJURY, OR UNINTENDED EQUIPMENT DAMAGE

Before operating any of these products, be sure to read all related manuals thoroughly.

Failure to follow these instruction can result in death or serious injury, unintended equipment damage.

- For printing purposes, the colors in this catalog may differ from those of the actual unit.
- Actual user screens may differ from the screens shown here.
- Electric equipment should be installed, operated, serviced, and maintained only by qualified personnel. No responsibility is assumed by Digital for any consequences arising out of the use of this material.
- All product names used in this catalog are the registered trademarks or trademarks of their respective companies.
- All information contained in this catalog is subject to change without notice.

<p>Global Headquarters Digital Electronics Corporation Osaka, JAPAN Tel: +81 (0)6 6613 1101 Fax: +81 (0)6 6613 5888 www.pro-face.com info@pro-face.com</p>	<p>North America Pro-face America, Inc. Ann Arbor, MI U.S.A Tel: +1 734 477 0600 Fax: +1 734 864 7347 www.profaceamerica.com info@profaceamerica.com</p>	<p>Taiwan Pro-face Taiwan Co., Ltd. Taipei, TAIWAN Tel: +886 (0)2 2657 1121 Fax: +886 (0)2 2657 1021 www.proface.com.tw proface@proface.com.tw</p>	<p>European Headquarters Pro-face Europe B.V. Hoofddorp, THE NETHERLANDS Tel: +31 (0)23 55 44 099 Fax: +31 (0)23 55 44 090 www.proface.eu info@proface.eu</p>	<p>Italy Pro-face Italia S.p.a. Bovisio Masciago (Milano), ITALY Tel: +39 (0)362 59 96 1 Fax: +39 (0)362 59 96 69 www.proface.it info@proface.it</p>	<p>Spain and Portugal Pro-face España Cardedeu (Barcelona), SPAIN Tel: +34 (0)93 846 07 45 Fax: +34 (0)93 845 48 68 www.proface.es info@proface.es</p>
<p>Australia and New Zealand Pro-face Australia Mt. Waverley, AUSTRALIA Tel: +61 (0)3 9550 7396 Fax: +61 (0)3 9550 7390 www.pro-face.com.au www.pro-face.co.nz pfau@pro-face.com</p>	<p>Singapore Pro-face Singapore TechPoint, Singapore Tel: +65-6832-5533 Fax: +65-6415-1605 www.proface.sg info@proface.sg</p>	<p>South-East Asia Pacific Pro-face South-East Asia Pacific Co., Ltd. Bangkok, THAILAND Tel: +66 (0)2 617 5678 Fax: +66 (0)2 617 5688 www.proface.co.th pfsales@proface.co.th</p>	<p>Austria Pro-face Europe B.V.(Austria Office) Hagenberg, AUSTRIA Tel: +43 7236 3343 620 FAX: +43 7236 3343 629 www.proface.at info@proface.at</p>	<p>Denmark Pro-face Northern Europe ApS Roskilde, DENMARK Tel: +45 70 22 01 22 Fax: +45 70 22 01 33 www.proface.dk info@proface.dk</p>	<p>Sweden Pro-face Sweden AB Löddeköpinge (Malmö), SWEDEN Tel: +46 46 540 90 70 Fax: +46 46 71 27 90 www.proface.se info@proface.se</p>
<p>China Pro-face China International Trading Co., Ltd. Shanghai, P. R. CHINA Tel: +86 (0)21 6361 5175 Fax: +86 (0)21 6361 5176 www.proface.com.cn proface@proface.com.cn</p>	<p>South Korea Pro-face Korea Co., Ltd. Seoul, SOUTH KOREA Tel: +82 (0)2 2630 9850 Fax: +82 (0)2 2630 9860 www.proface.co.kr proface@proface.co.kr</p>	<p>France Pro-face France S.A.S. Mity-Mory, FRANCE Tel: +33 (0)1 60 21 22 91 Fax: +33 (0)1 60 21 22 92 www.proface.fr info@proface.fr</p>	<p>Poland Pro-face Europe B.V.(Warsaw Office) Warszawa, POLAND Tel: +48 (22) 465 66 62 Fax: +48 (22) 465 66 67 www.proface.pl info@proface.pl</p>	<p>Russia Pro-face Europe B.V. (Russia Office) Saint-Petersburg, RUSSIA Tel: +7 (812) 336 47 06 Fax: +7 (812) 336 47 18 www.pro-face.ru info@pro-face.ru</p>	<p>Switzerland Pro-face Schweiz GmbH Regensdorf, SWITZERLAND Tel: +41 (0)43 343 7272 Fax: +41 (0)43 343 7279 www.proface.ch info@proface.ch</p>
<p>India Pro-face India Bangalore, INDIA Tel: +91 80 4333 3540/3541 Fax: +91 80 4333 3222 www.proface.co.in sales.proface@proface.co.in</p>	<p>Germany Pro-face Deutschland GmbH Solingen, GERMANY Tel: +49 (0)212 258 2640 Fax: +49 (0)212 258 2640 www.proface.de info@pro-face.de</p>	<p>United Kingdom Pro-face UK Ltd Coventry, ENGLAND Tel: +44 (0)2476 511288 Fax: +44 (0)2476 511499 www.proface.co.uk info@proface.co.uk</p>			